



## THE COMPTON

WE OFFER FIVE LUXURIOUSLY APPOINTED APARTMENTS SET IN THE GRAND AND TRANQUIL VILLAGE OF ST JOHN'S WOOD, LONDON .

With one of London's most prestigious postcodes, The Compton is an exclusive collection of apartments and penthouses, designed in collaboration with world famous interior designer Kelly Hoppen. Located in St John's Wood, a magnificent and serene village set in the heart of London.



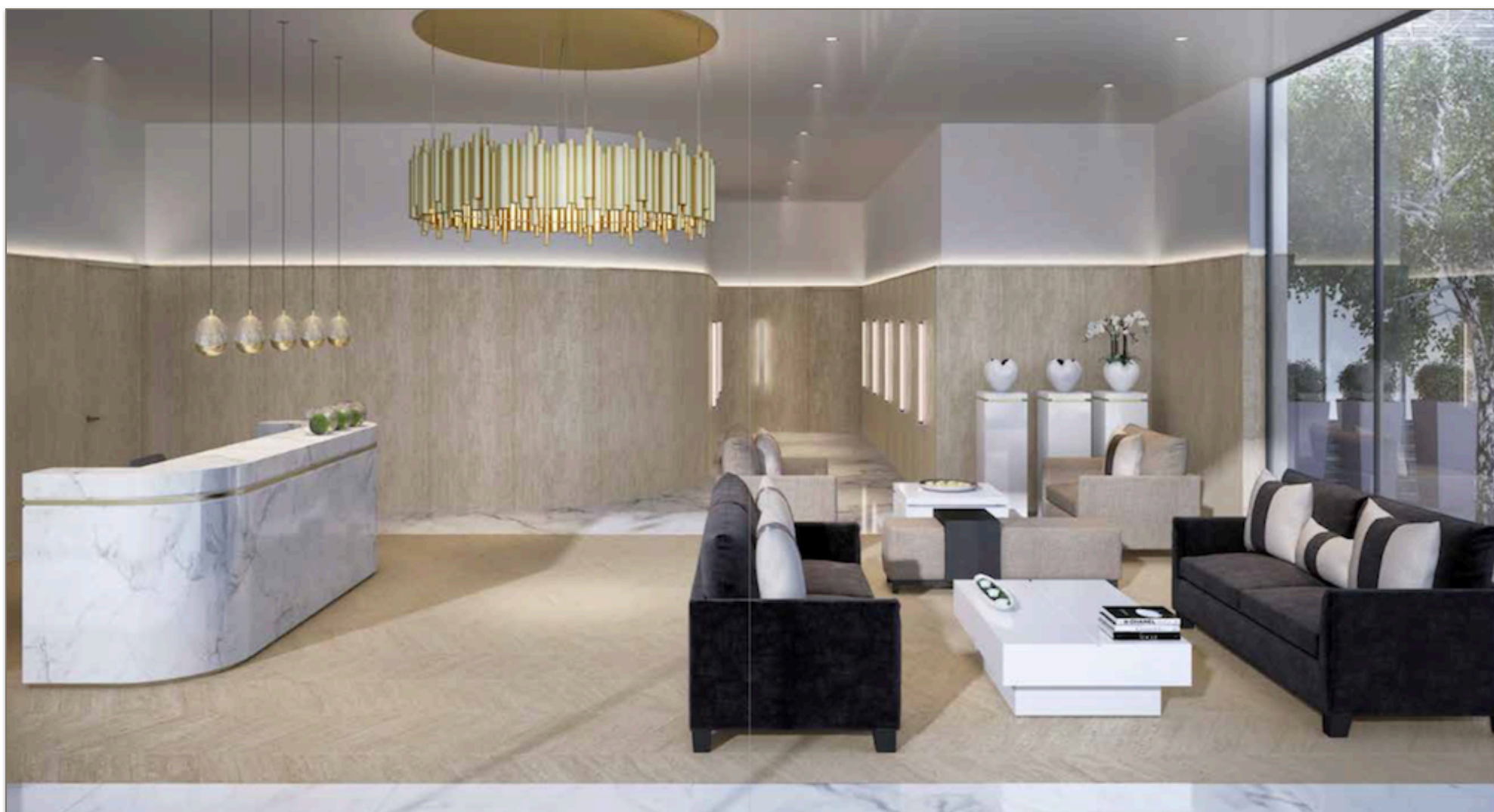
REGENT'S PARK VIEW

## THE LOCATION - ST JOHN'S WOOD, LONDON, NW8

It is one of the capital's most desirable residential locations. With an attractive high street filled with chic boutiques, charming cafés and bustling bars. Situated minutes from the stunning Regent's Park and two short stops from Bond Street, St John's Wood is impeccably located.

Our apartments at the new development 'The Compton' are minutes from the world famous Abbey Road studios, the fashionable St John's Wood High street and two short stops from Bond Street on the Jubilee Line.

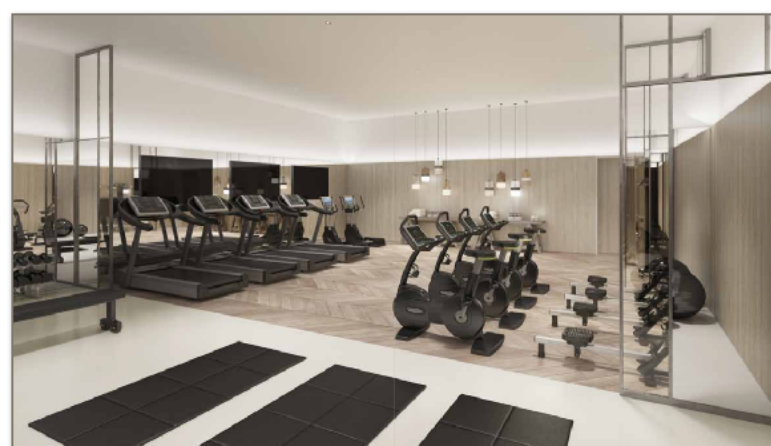




## THE COMPTON DEVELOPMENT BY REGAL HOMES ST JOHN'S WOOD, LONDON, NW8

Globally renowned interior designer Kelly Hoppen MBE, has a relentless passion for design. Her award winning style is featured in the homes, yachts and jets of private clients, as well as many commercial projects the world over, including hotels, bars, restaurants, offices and tower blocks. Kelly has collaborated with Regal London on The Compton, an exquisitely elegant development.

The scheme consists of chic one and two bedroom apartments, in addition to exclusive and luxurious three bedroom penthouses with accompanying roof terraces. Beautifully furnished with Kelly Hoppen London handcrafted furniture and home accessories, The Compton has been created with style and relaxation in mind.





WE OFFER EXCLUSIVELY FIVE UNIQUE APARTMENTS ON FORTH SIXTH AND SEVENTH FLOORS



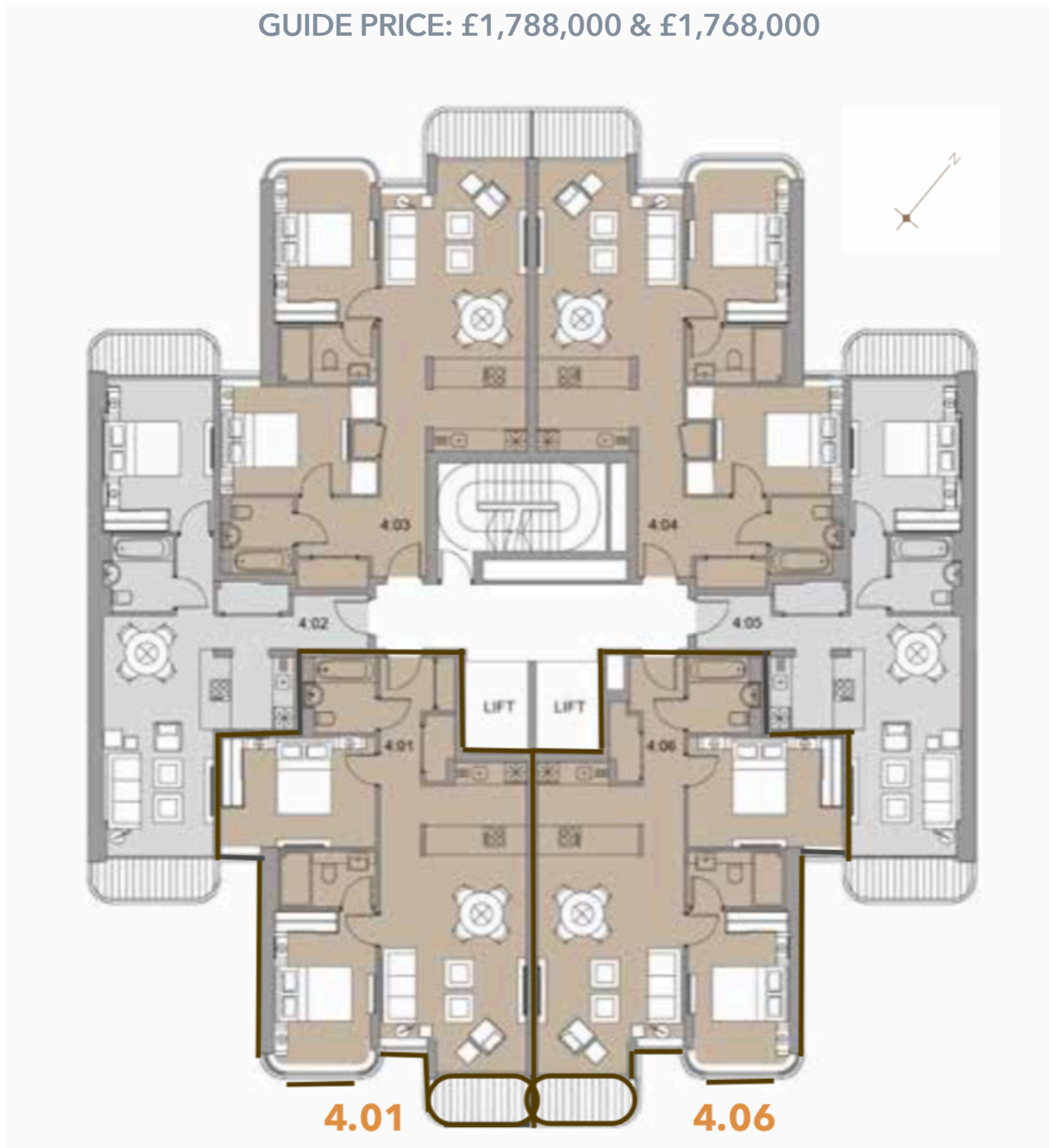
Every room has been carefully considered to be chic, comfortable, luxurious and functional. Finished to the highest specifications, with an exclusive list of suppliers to ensure the finest, bespoke details. The Regal Homes partnership with Kelly Hoppen ensures that apartments are elegant and stunning throughout, resulting in design perfection. All materials and finishes have been thoughtfully considered to create the most stylish, magnificent rooms. With oak veneer chevron wood flooring

running throughout all living areas and sumptuous carpets and fitted wardrobes in all bedrooms, each apartment is refined and functional in design. The heart of the home, each kitchen has been designed with entertainment and relaxation in mind. High-specification appliances, quartz stone worktops

# FOURTH FLOOR

## APARTMENTS 4.01 & 4.06

GUIDE PRICE: £1,788,000 & £1,768,000



FLAT 4.01  
*two bedroom*

FLAT 4.06  
*two bedroom*

	M	Total M <sup>2</sup> / FT <sup>2</sup>
<b>Total area</b>		<b>73.5 / 791</b>
Kitchen / Lounge / Diner	8.5 x 4.0	31.9 / 343
Master Bedroom	4.2 x 2.8	11.6 / 125
Bedroom 2	4.2 x 3.0	13.0 / 140
Terrace / Balcony	-	3.6 / 39

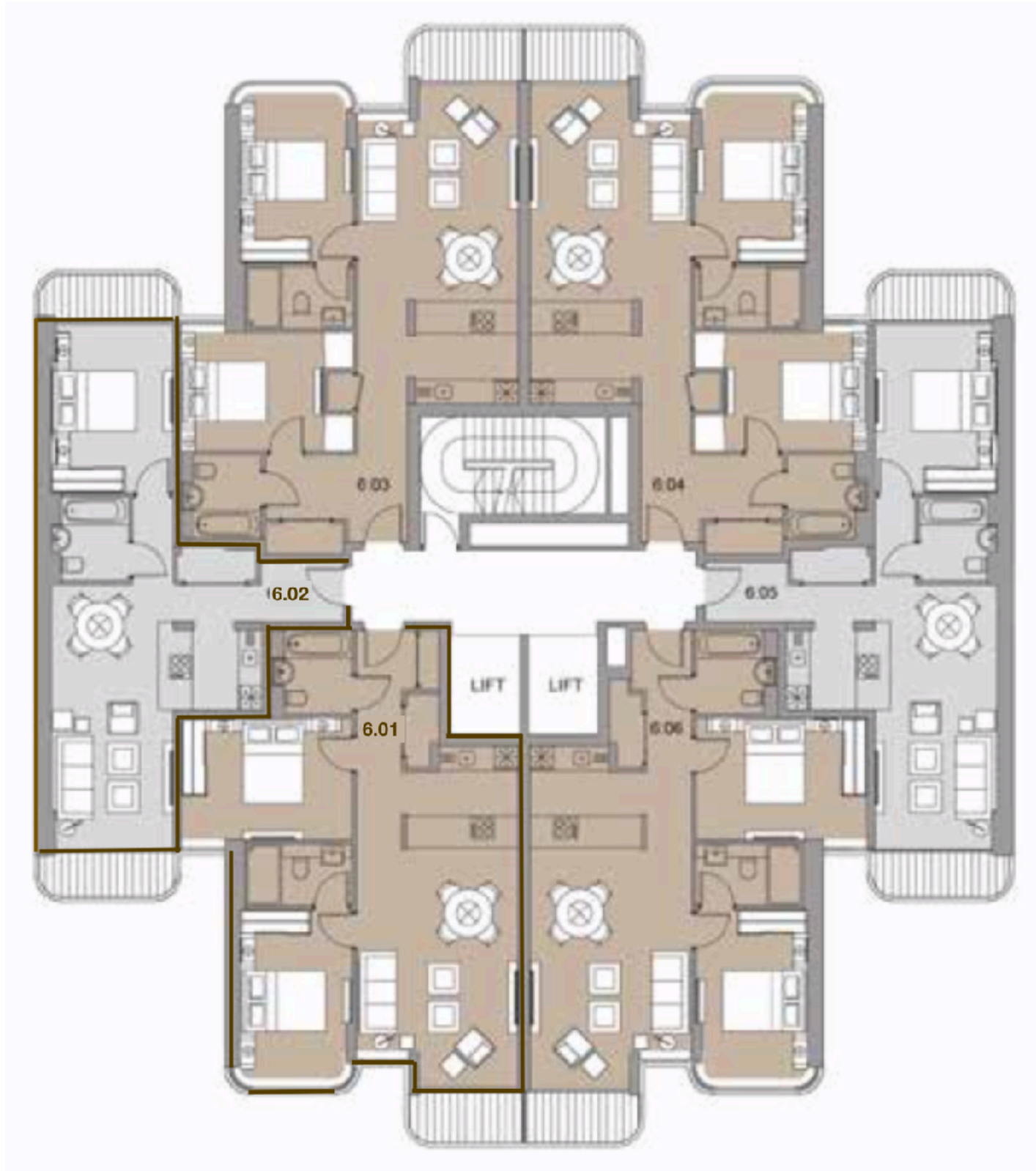
	M	Total M <sup>2</sup> / FT <sup>2</sup>
<b>Total area</b>		<b>72.8 / 784</b>
Kitchen / Lounge / Diner	8.5 x 4.0	31.9 / 343
Master Bedroom	4.2 x 2.8	11.6 / 125
Bedroom 2	4.2 x 3.0	13.0 / 140
Terrace / Balcony	-	3.6 / 39

Design option to combine the two units into a single lateral apartment when they are purchased together.

# SIXTH FLOOR

## APARTMENT 6.01 & 6.02

GUIDE PRICE: £1,853,000 & £1,258,000



FLAT 6.01  
*two bedroom*

FLAT 6.02  
*one bedroom*

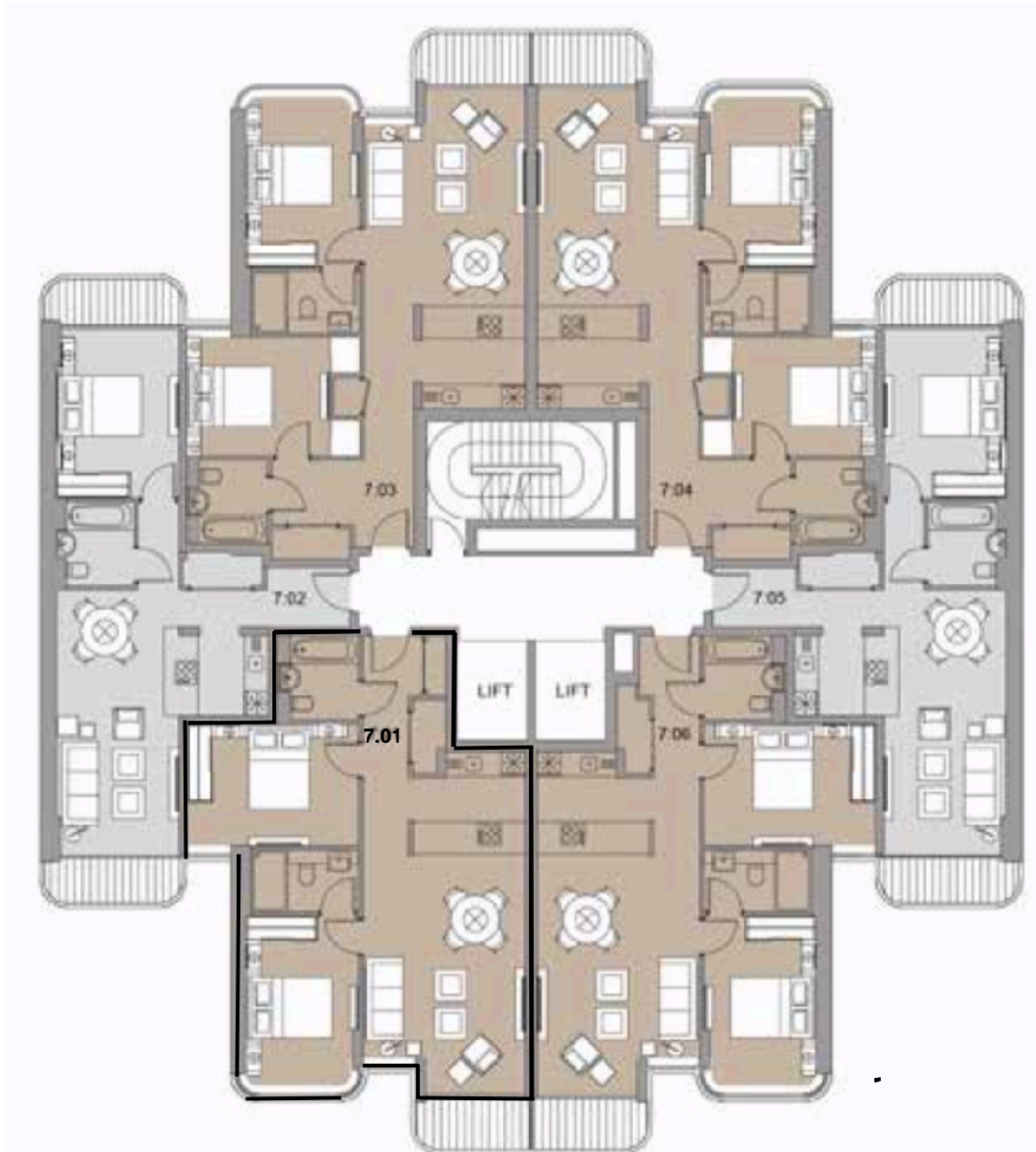
	M	Total M <sup>2</sup> / FT <sup>2</sup>
<b>Total area</b>		<b>73.5 / 791</b>
Kitchen / Lounge / Diner	8.5 x 4.0	31.9 / 343
Master Bedroom	4.2 x 2.8	11.6 / 125
Bedroom 2	4.2 x 3.0	13.0 / 140
Terrace / Balcony	-	3.6 / 39

	M	Total M <sup>2</sup> / FT <sup>2</sup>
<b>Total area</b>		<b>51.3 / 552</b>
Kitchen / Lounge / Diner	6.5 x 5.2	27.0 / 291
Bedroom	4.2 x 3.0	12.8 / 138
Terrace / Balcony 1	-	3.8 / 41
Terrace / Balcony 2	-	3.8 / 41

# SEVENTH FLOOR

APARTMENT 7.01  
SOUTH FACING

GUIDE PRICE: £1,888,000



## FLAT 7.01 *two bedroom*

	M	Total M <sup>2</sup> / FT <sup>2</sup>
<b>Total area</b>		<b>73.5 / 791</b>
Kitchen / Lounge / Diner	8.5 x 4.0	31.9 / 343
Master Bedroom	4.2 x 2.8	11.6 / 125
Bedroom 2	4.2 x 3.0	13.0 / 140
Terrace / Balcony	-	3.6 / 39



## THE COMPTON

Contact : Glen Evans  
OneSkylon  
[glen@oneskylon.com](mailto:glen@oneskylon.com)